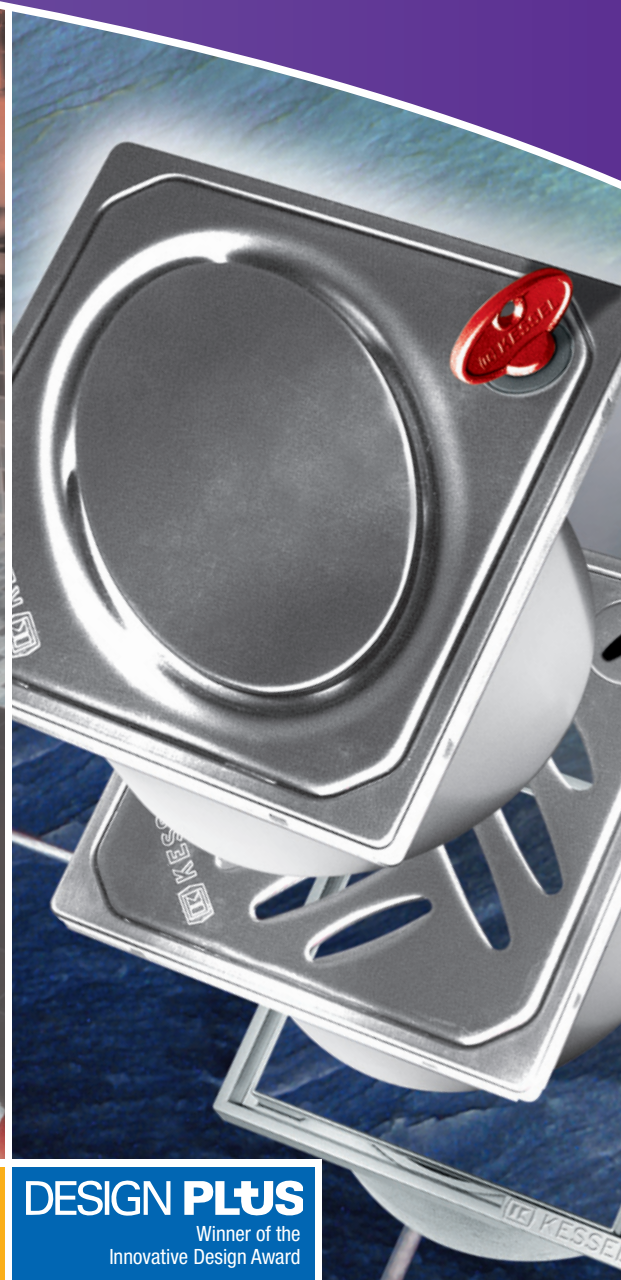


Progress has reached a new level

The New KESSEL Bathroom Drain Collection



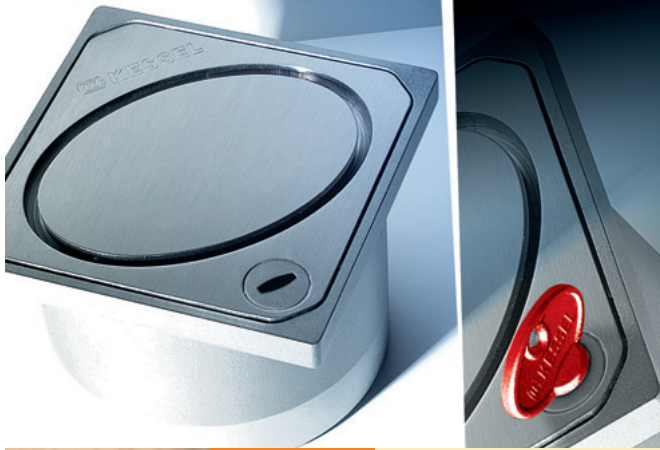
DESIGN PLUS
Winner of the
Innovative Design Award

Exceptional advantages



DESIGN PLUS

Winner of the
Innovative Design Award



The New KESSEL Bathroom Drain Coll

Unmatched des

Newly designed covers for comm

Two new stainless steel covers with removal and locking system

NEW

KESSEL Lock & Lift System:
Simultaneous removal and
locking system



Bathroom Drain *Giro*[®]

System 125

Bathroom Drai

Flexible outlet
reduces noise transfer
to drainage piping

NEW



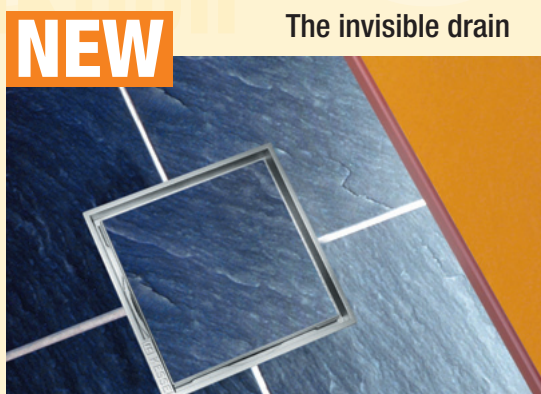
'The Superflat'
for extremely
low installations

NEW

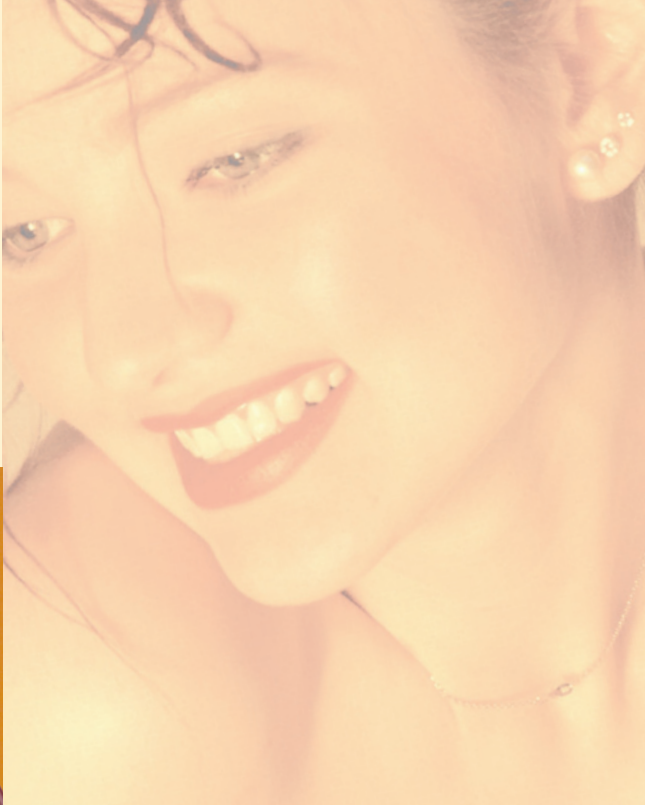


Collection with design and function

Special applications
New cover for installing tiles



NEW The invisible drain



Superflat' System 100



Bathroom Drain Classic System 100



NEW
Integrated gaskets guarantee a perfect fit

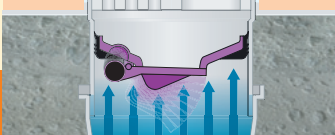
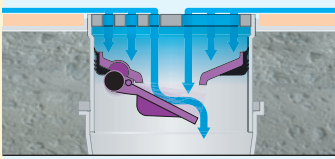


NEW
Removable hair filter

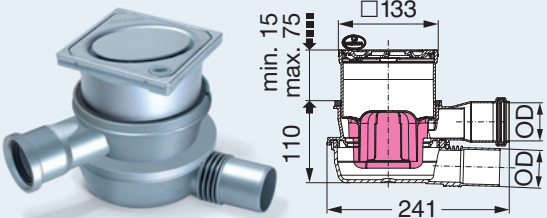
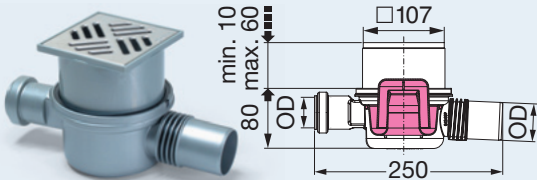
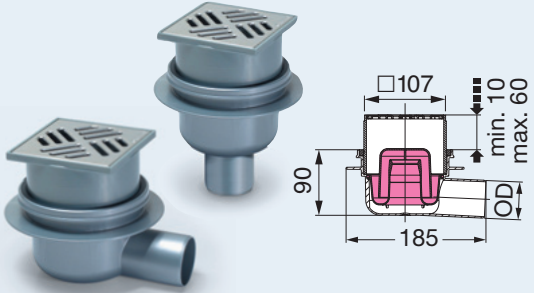




95 mm

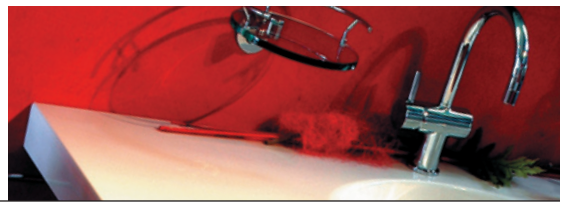
KESSEL – Multistop:
New to market odor, foam, rodent and insect stop.
Perfect for infrequently used drains with dried out odor traps. Installable in existing KESSEL floor drains



NEW

Illustration	Product Description	Outlet Size	Article Number
NEW System 125 For commercial and residential applications			
	<p>KESSEL Bathroom Drain Giro® NEW manufactured from sound dampening PP, OD Ø* 50 flexible outlet, 1.3 l / sec flow rate. With removable odor trap. With 360 degree rotatable OD Ø* 50 inlet and integrated body gasket. Vertically adjustable ABS upper section, 120 x 120 mm stainless steel cover and rim (in oval design), load class K (300 kg). KESSEL Lock & Lift System: simultaneous removal and locking system.</p>	OD Ø* 50	45 101.64
NEW System 100 For low installation heights (space saving)			
	<p>KESSEL Bathroom Drain 'The Superflat' NEW manufactured from sound dampening PP, OD Ø* 50 flexible outlet, 0.9 l / sec flow rate With removable odor trap. With lateral OD Ø* 40 inlet and integrated body gasket. Vertically adjustable ABS upper section, 100 x 100 mm stainless steel cover, load class K (300 kg). Lowest installation height – 90mm.</p>	OD Ø* 50	42 701.20
NEW System 100 The classic drain for indoor and outdoor installation			
	<p>KESSEL Bathroom Drain Classic manufactured from ABS, lateral outlet (2.5 deg slope), 0.9 l / sec flow rate manufactured from ABS, vertical outlet, 0.9 l / sec flow rate With removable odor trap (50 mm height). With integrated body gasket. Vertically adjustable ABS upper section, 100 x 100 mm stainless steel cover, load class K (300 kg).</p>	OD Ø* 50 40 150.20 OD Ø* 75 40 170.20 OD Ø* 50 40 250.20 OD Ø* 75 40 270.20	
NEW KESSEL-Upper Sections (ABS)			
	<p>with oval grill design, 120 x 120 mm stainless steel cover and rim, load class K (300 kg). With KESSEL Lock & Lift System.</p> <p>with patented grill design, 120 x 120 mm stainless steel cover and rim, load class K (300 kg). With KESSEL Lock & Lift System.</p> <p>with 110 x 110 mm recessed drain cover for on-site tiling, tile thicknesses up to 10mm</p>	System 100 27 202 System 125 48 202 System 100 27 201 System 125 48 201 System 100 27 210 System 125 48 210	
NEW KESSEL – Multistop			
	<p>Rodent, insect, foam and odor stop. Usable in currently installed KESSEL floor drains.</p>	System 100 43 500 System 125 48 500	

*OD = outer diameter



System 100 Drain bodies

NEW

The Classic bathroom drain, ABS
OD Ø* 50 or 75 outlet, with odor trap

'The Superflat' bathroom drain, PP
OD Ø* 50 outlet, with odor trap



Lateral outlet
OD Ø* 50 Art # 40 150
OD Ø* 75 Art # 40 170

Vertical outlet
OD Ø* 50 Art # 40 250
OD Ø* 75 Art # 40 270

No lateral inlets
Art # 42 700

OD Ø* 40 lateral inlet
Art # 42 701

3 OD Ø* 40 lateral inlets
Art # 42 703

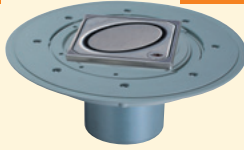
System 100 Covers with sealing flanges

Also fit KESSEL stainless steel drains OD Ø* 75/100

NEW

NEW

NEW



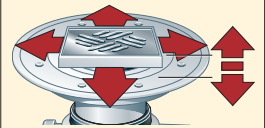
Variofix ABS sealing flange
with 95 x 95 mm stainless steel cover.
For tile thicknesses between 6 – 14 mm
Art # 47 901

Variofix ABS sealing flange
with 120 x 120 mm stainless steel cover and rim.
For tile thicknesses between 8 – 16 mm
Lock & Lift System
KESSEL grill
Art # 47 904

Oval design
Art # 47 905

Variofix ABS sealing flange
with 150 x 150 mm stainless steel cover and rim - screwed
For tile thicknesses between 8 – 16 mm.
Lock & Lift System
Art # 47 902

Easy installation



KESSEL Variofix system allows lateral and vertical grill adjustment for matching tile patterns and thicknesses

System 100 Upper sections

Also fit KESSEL stainless steel drains OD Ø* 75/100



NEW



ABS Upper Section
with 100 x 100 mm stainless steel cover.
Art # 27 165

ABS Upper Section
with 120 x 120 mm stainless steel cover and rim.
Lock & Lift System.
KESSEL grill
Art # 27 201
Oval design
Art # 27 202

ABS Upper Section
with 138 x 138 mm stainless steel cover.
Art # 27 191 (screwed)
Art # 27 190 (unscrewed)
with 138 x 138 mm black ABS cover
Art # 27 193

ABS Upper Section
with 150x150mm stainless steel cover and rim.
Art # 27 196
with 150x150mm anti-slip stainless steel cover and rim.
Art # 27 176

PA Upper Section
with Ø 120 mm clamping flange
white polymer grill
Art # 27 192

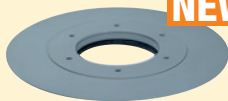
System 100 Accessories

Also fit KESSEL stainless steel drains OD Ø* 75/100

NEW

NEW

NEW



Glue flange
with base
Art # 43 401

Multistop
as rodent, insect,
foam and odor stop
Art # 43 500

Hair Filter
plastic
Art # 43 700



System 125 Drain bodies **NEW**

The Giro® bathroom drain, PP
OD Ø* 50 outlet, with odor trap



single OD Ø* 50 lateral inlet, 360 deg rotatable
Art # 45 101

The Giro® bathroom drain, PP
OD Ø* 50 outlet, with odor trap



4 OD Ø* 40 lateral inlets, 360 deg rotatable
Art # 45 104

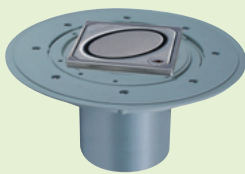
System 125 Covers with sealing flanges Also fit KESSEL cast iron drains OD Ø* 75/ 100



NEW

Variofix ABS sealing flange
with 120 x 120 mm stainless steel cover and rim - screwed,
load class K (300 Kg). For tile thicknesses between 8 – 16 mm
Lock & Lift System

KESSEL grill
Art # 48 904



NEW

Oval design
Art # 48 905



Variofix ABS sealing flange
with 148 x 148 mm stainless steel cover and rim - screwed,
load class K (300 Kg).
For tile thicknesses between 8 – 16 mm. Lock & Lift System
Art # 48 963

Easy installation

KESSEL Variofix system allows lateral and vertical grill adjustment for matching tile patterns and thicknesses

System 125 Upper sections Also fit KESSEL cast iron drains OD Ø* 75/ 100



NEW

ABS Upper Section
with 120 x 120 mm stainless steel cover and rim.
Lock & Lift System.

KESSEL grill
Art # 48 201

Oval design
Art # 48 202



ABS Upper Section
with 138 x 138 mm stainless steel cover.
Art # 48 950 (screwed)
Art # 48 190 (unscrewed)



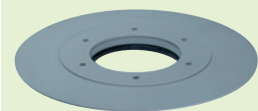
ABS Upper Section
with 150x150mm stainless steel cover and rim - screwed,
load class K (300 Kg).
Art # 48 951



Solid stainless Upper Section
with 138 x 138 mm stainless steel cover - screwed,
load class K (300 Kg).
Art # 48 977

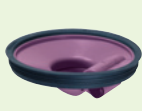
with 138 x 138 mm stainless steel cover load class L (1500 Kg).
Art # 48 177

System 125 Accessories Also fit KESSEL cast iron drains OD Ø* 75/ 100



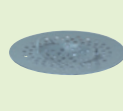
NEW

Glue flange
with base
Art # 48 401



NEW

Multistop
as rodent, insect,
foam and odor stop
Art # 48 500



NEW

Hair Filter
plastic
Art # 48 700

Sach-Nr. 010-338 KA 04/05